

Esko Configuration Manager

- 7 Reasons to Use -

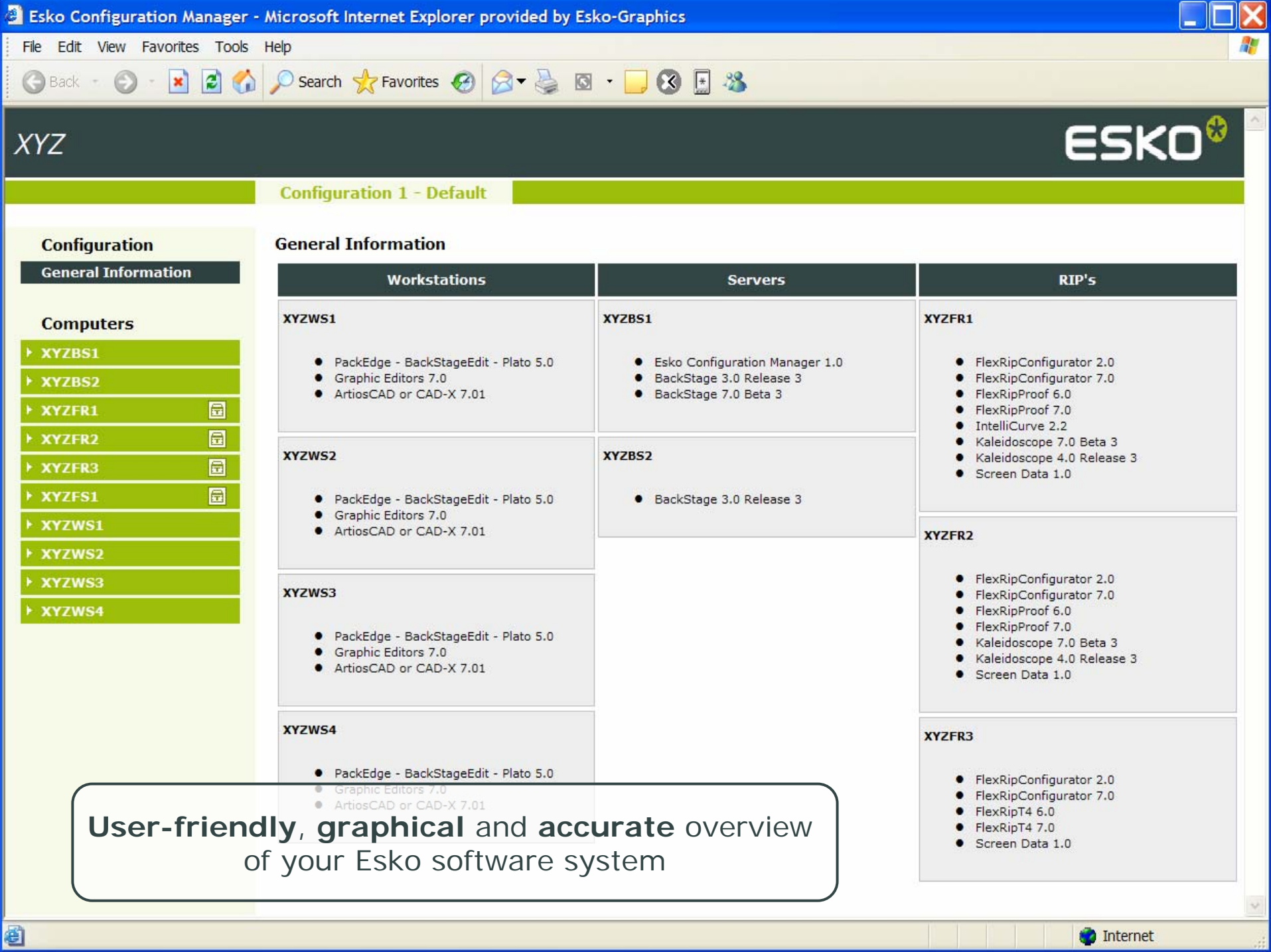
June 2007

7 Reasons to Use

- 1 Get a quick overview of what Esko software is **installed** and where
- 2 Access to **overview reports** from any workstation running Esko software
- 3 Allows **faster and easier** problem diagnosis by Esko
- 4 Information about the **availability** of Esko software updates
- 5 Tools for **downloading and deploying** those Esko software updates
- 6 **Notifications** about Esko licenses that are about to expire
- 7 Information to **optimize** your IT infrastructure

1 Get a quick overview of what Esko software is installed and where

- Practical and accurate information on all stations that have the Esko Configuration Manager tools installed
 - Hardware overview and details
 - Operating System details and services
 - Overview on installed Esko software and licenses
 - Selection of 3rd party software (Adobe Illustrator, PhotoShop, etc.) for compatibility reasons
- Installed Esko software
 - Esko BackStage, FlexRip, FastImpose, WebCenter, ...
 - Esko ArtiosCAD, PackEdge, Plato
 - Esko FlexoTools
- What is still missing?
 - Information on Esko software installed and running on Mac OS X



Configuration 1 - Default

Configuration

General Information

Computers

- XYZBS1
- XYZBS2
- XYZFR1
- XYZFR2
- XYZFR3
- XYZFS1
- XYZWS1
- XYZWS2
- XYZWS3
- XYZWS4

General Information

Workstations	Servers	RIP's
<p>XYZWS1</p> <ul style="list-style-type: none"> ● PackEdge - BackStageEdit - Plato 5.0 ● Graphic Editors 7.0 ● ArtiosCAD or CAD-X 7.01 	<p>XYZBS1</p> <ul style="list-style-type: none"> ● Esko Configuration Manager 1.0 ● BackStage 3.0 Release 3 ● BackStage 7.0 Beta 3 	<p>XYZFR1</p> <ul style="list-style-type: none"> ● FlexRipConfigurator 2.0 ● FlexRipConfigurator 7.0 ● FlexRipProof 6.0 ● FlexRipProof 7.0 ● IntelliCurve 2.2 ● Kaleidoscope 7.0 Beta 3 ● Kaleidoscope 4.0 Release 3 ● Screen Data 1.0
<p>XYZWS2</p> <ul style="list-style-type: none"> ● PackEdge - BackStageEdit - Plato 5.0 ● Graphic Editors 7.0 ● ArtiosCAD or CAD-X 7.01 	<p>XYZBS2</p> <ul style="list-style-type: none"> ● BackStage 3.0 Release 3 	<p>XYZFR2</p> <ul style="list-style-type: none"> ● FlexRipConfigurator 2.0 ● FlexRipConfigurator 7.0 ● FlexRipProof 6.0 ● FlexRipProof 7.0 ● Kaleidoscope 7.0 Beta 3 ● Kaleidoscope 4.0 Release 3 ● Screen Data 1.0
<p>XYZWS3</p> <ul style="list-style-type: none"> ● PackEdge - BackStageEdit - Plato 5.0 ● Graphic Editors 7.0 ● ArtiosCAD or CAD-X 7.01 		<p>XYZFR3</p> <ul style="list-style-type: none"> ● FlexRipConfigurator 2.0 ● FlexRipConfigurator 7.0 ● FlexRipT4 6.0 ● FlexRipT4 7.0 ● Screen Data 1.0
<p>XYZWS4</p> <ul style="list-style-type: none"> ● PackEdge - BackStageEdit - Plato 5.0 ● Graphic Editors 7.0 ● ArtiosCAD or CAD-X 7.01 		

User-friendly, graphical and accurate overview of your Esko software system

2 Access to overview reports

- Available reports
 - “Most Recent” system information file
 - License expiration report
 - Full license report
 - Historic overview of system information files
- These reports are compiled locally at the customer site by the Esko Configuration Manager, once per day
- Reports can be accessed from any Microsoft Windows workstation running Esko software
 - Via Start > Programs > Esko > Station Information Service > Configuration Manager Report
 - No special software needed to read these reports, just a browser

3 Faster and easier problem diagnosis

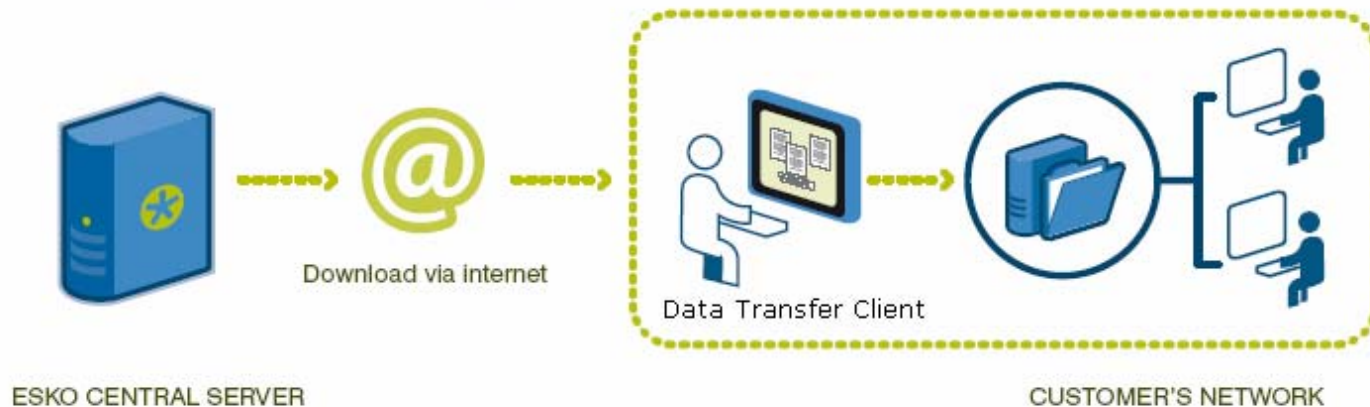
- By sending the system information files to Esko the same accurate overview is available at Esko
- This has the following benefits
 - Allows a technical support engineer to quickly visualize an overview of what Esko software is installed on what workstation
 - Faster diagnosis of the problem
 - Pinpoint more rapidly faulty installations
 - Easier and faster handling of license-related issues
- The faster and the better (in terms of quality) a problem is correctly diagnosed, the faster the problem solving process can start

4 Esko software updates

- Provide Esko software updates via the Internet using the Esko Configuration Manager and the Esko Data Transfer Client
- Updating the Esko software suite electronically via the Internet or using the Esko software DVD will always lead to the same end result
- How does the update process work via the Internet?
 - Based on what Esko software is installed, the services at Esko know what updates are available specifically for a customer site
 - A responsible person at the customer premises receives a customized e-mail including instructions on how to run the software download and update process
 - The **Esko Data Transfer Client** will only download the **needed files**
 - Esko software updates are downloaded only **once** for the entire site
 - Every workstation with Esko software installed can be updated by accessing the download folder on the correct network share and run the **“update installer”**

Esko software updates (cont.)

- Requirements
 - Only **one** station with access to the Internet is needed
 - “Internet access” can even be restricted to **HTTP and HTTPS** only
- Available in **Esko Software Suite 7** for all Esko software **maintenance contract** customers



What is needed to make it work?

Esko Configuration Manager

- Install on **one** station
- The Esko Configuration Manager requires its **own** e-mail address (i.e. separate mailbox)
- **Outgoing** and **incoming** mail server must be specified
- Computer name that has the **Esko Data Transfer Client** installed must be known
- **e-mail address of the Esko software responsible** at the customer (typically the IT administrator or prepress manager)

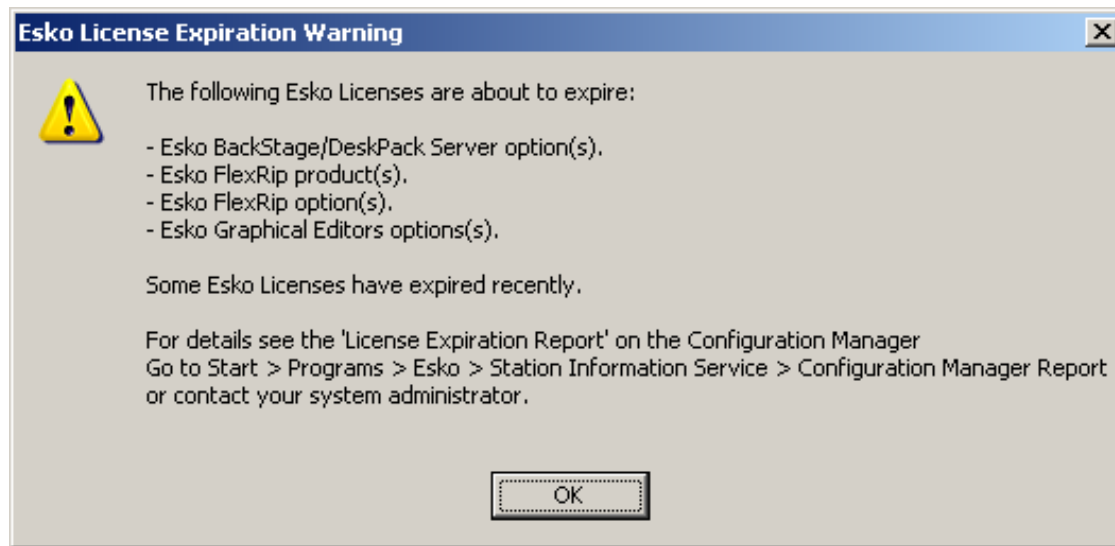
Esko Data Transfer Client

- Install on **one** workstation with **HTTP/HTTPS** access to the Internet
- The Esko Data Transfer Client¹ must be **accessible** by the Esko Configuration Manager

¹ Built on Microsoft's *Background Intelligent Transfer Service* (BITS)

Esko license expiration notification

- Improved Esko license expiration notification scheme to timely warn about licenses that are about to expire





www.esko.com