

Fast, consistent and high quality output to any imaging device



FlexRip

FlexRip is a fast, consistent and high quality **RIP solution for all output**. It offers uncompromised compatibility with open industry standards, while delivering award-winning **screening for any print process**. FlexRip outputs to file and features tools for job verification to reduce waste levels and error rate. With its **color management** engine, FlexRip profiles digital proofers and presses and calibrates any imaging device including spot colors. FlexRip is **workflow and device independent**. It drives current and future devices alike and offers an unmatched **growth path** into different market segments. It is the most comprehensive RIP solution in the market.

Key benefits

- **Consistency between all output**

FlexRip is a device-independent RIP for filmsetters, platesetters, proofing devices and digital presses. FlexRip guarantees absolute output consistency along with flexibility and high performance. It always rips individual separations first, before outputting to specific formats.

- **Print quality improvement**

FlexRip offers specialized screening technologies for a variety of printing processes. These technologies are machine independent and provide exceptional print quality.

- **Reduce consumable use**

FlexRip provides powerful quality control tools to digitally verify ripped data for content and printability before output. This allows users to dramatically reduce waste of film, plate or proofing materials resulting from output errors.

- **Error reduction**

FlexRip's single RIP engine interprets a single input file for all output. The operator does not need to generate different files for proofers and film, dramatically reducing the margin for error. This saves operator time and rules out data inconsistency, thus reducing errors.

- **Scaleable and modular**

As your business grows, your production volume increases. FlexRip's modular approach is extremely scalable, providing cost-efficient solutions to increase production as your operation grows. FlexRip's wide variety of screening modules provides easy entry into different print markets without the need to change your prepress operation.

- **Effortless adoption and integration of digital printing**

FlexRip fully automates data and color management for digital printing. It maximizes job throughput and drastically reduces press setup times providing perfect consistency, predictability and repeatability on digital presses.

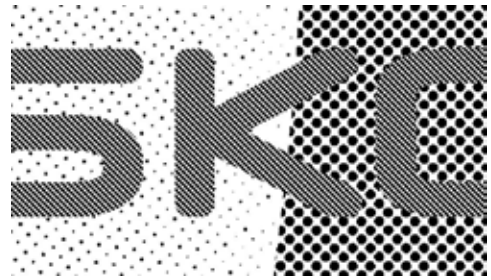
Cutting edge screening technologies for every printing process

Flexography: Groovy, SambaFlex, Second order Monet FM, Eccentric, PerfectHighlights

Offset: HighLine, Monet FM, HighLineXM

Gravure: Helio screens

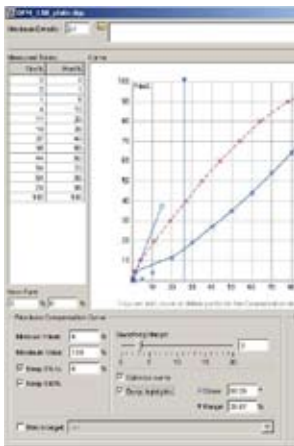
Silkscreen: Rugby, DynaCell



Combination of Groovy, PerfectHighlights and Circular dots in one separation

Different dot shapes in one separation

Make the most of FlexRip's screening technologies by combining them where they deliver the finest print quality. In packaging, for example, use SambaFlex or PerfectHighlights transitional screening in vignettes but standard circular dots in midtones.



IntelliCurve Pro: Dot gain control with unrivalled accuracy

IntelliCurvePro is a tool for dot gain compensation and imager calibration. To make sure that an image never loses detail or contrast IntelliCurvePro features color-based dot gain curves that strategically compensate for each color's different behavior on various presses and substrates. Automatic compensation for individual colors is performed in the RIP, leaving no room for operator error. IntelliCurvePro further reduces the possibility of error by applying automatic curve generation by importing measurements from press targets. This helps make IntelliCurvePro the most advanced, accurate and user-friendly dot gain engine available.

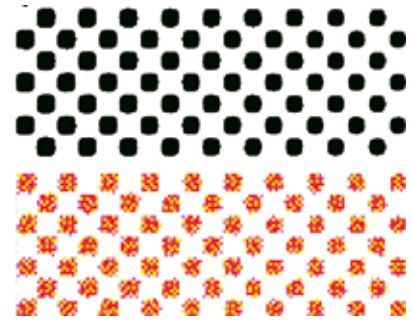
Esko Bitmap Viewer: Quality control taken to extremes

Esko Bitmap Viewer is FlexRip's powerful quality control tool that digitally verifies ripped data for content and printability before output. Users are able to preview ruling, angles, traps, line thickness, dot gain, resolution, seamless check, minimum dot size and other job critical data. In addition, Esko Bitmap Viewer compares different versions of a job and automatically highlights all differences. Esko Bitmap Viewer clearly shows any mistake before it is output to film, plate or press. It saves time and considerably reduces waste.



Guaranteed consistency between plate and proof

IntelliCurvePro combines press and proofer dot gain curves to generate extremely accurate dot proofs, predicting press behavior such as moiré effects or screening patterns. **FlexProof** drives popular inkjet devices, guarantees consistency between plate and proof and can predict specific press behavior such as the flexo highlight breaks on both screened and unscreened proofs.

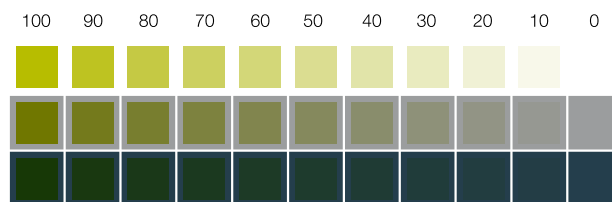


DotProofing on inkjet devices.

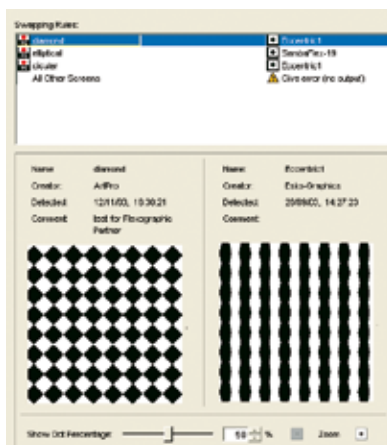
Spectral profiling of special colors



Kaleidoscope color management combines CMYK (colorimetric) profiling with patented special color (spectral) profiling. Special colors are individually profiled and stored in a database, resulting in excellent special color matching for digital proofers and presses. Kaleidoscope also excels in profiling any multicolor process set.



Ink profiling

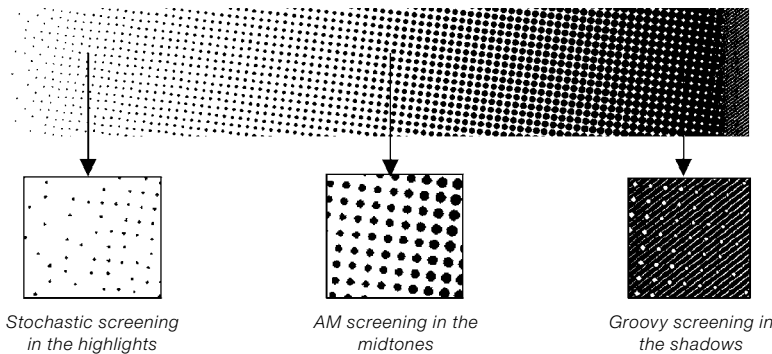
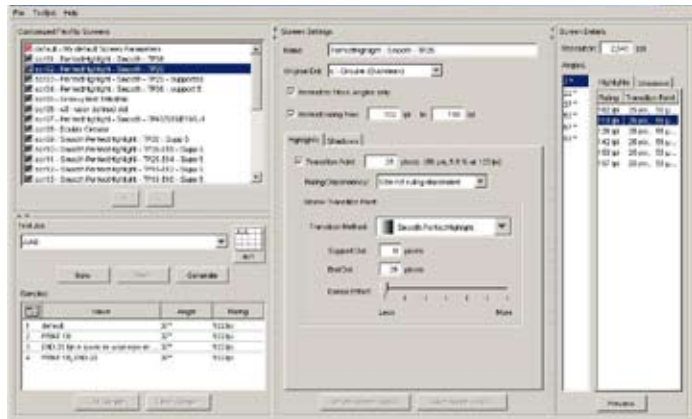


Optimize desktop publishing (DTP) workflows via ScreenFilter

ScreenFilter captures screens in PostScript files and swaps them for specialized FlexRip screens, using operator-defined swap tables. These swap tables allow operators to use multiple dot shapes per separation from standard DTP packages.

Customized screening via ScreenManager

ScreenManager is a tool that combines Esko screening technologies with each other into your own customized screening collection. You will stay a step ahead of your competition while fine-tuning and optimizing print quality to your company's capabilities. Secure your business by offering a truly unique screening set. Or call on our screening consultants to create customized screens and get the most out of your printing process.



FlexRip is a member of Esko Software Suite 7, Esko's advanced workflow environment integrating a number of software products for packaging service providers and commercial printers. The Esko Software Suite covers a wide range of functions, from job management, through graphic and structural design and pre-production operations, to platemaking for printing and toolmaking for converting.