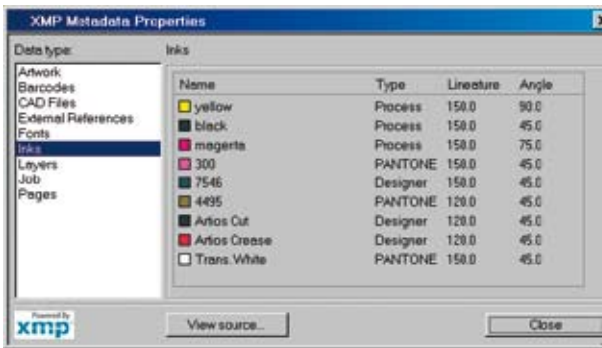


Graphic pre-production



PackEdge

PackEdge is packaging pre-production software offering dedicated tools for pre-flighting, editing, trapping, and color accurate viewing of overprints and transparencies. Running on standard PC hardware, and operating in the standard format PDF, PackEdge offers solid scalability at an affordable price.



Adobe Certified Input and Output. When running a standalone configuration, PackEdge comes with full Adobe PostScript and Adobe PDF 1.6 support, including layers, transparency, spot colors and OpenType font support. It also features an improved user interface, and seamlessly interchanges **Adobe® XMP** job metadata with desktop applications such as Adobe® Acrobat®, Adobe® InDesign® and Adobe® Illustrator®. Production related job data can be extracted from XMP data, without the need to open the PDF file. Layer support provides immediate feedback about die-cuts, the trapping layers, SmartMarks, barcodes, inks and their properties, and so on.

Pre-flighting using **Print Rule Checker** provides instant feedback so the creative professional can correct and immediately change and re-check the error. Warnings in Print Rule Checker alert the user to objects that do not comply with printability profiles used for design verification. Changing the object's incorrect parameter value – as indicated by Print Rule Checker – corrects the problem.



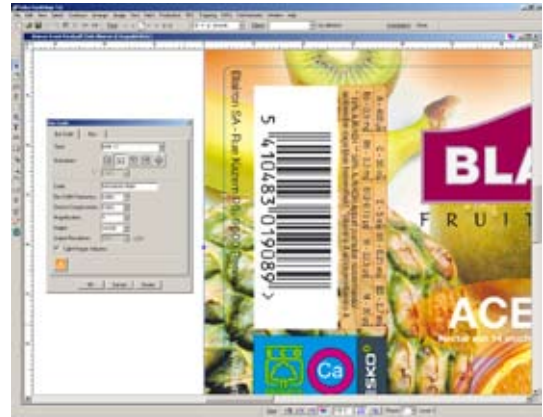
Automatic creation of print production controls - SmartMarks, which automatically create print production controls such as color bars, sheet corner marks, and trim marks, continue to demonstrate their production value with added functionality, allowing TextMarks to use for example XMP data. SmartMarks are dynamic and adapt automatically to changes in your job. Specific content can be grabbed by using SQL queries accessing any database. SmartID creates a unique ID for every version of a job.

Unsurpassed **trapping - ColorStitch** trapping offers accuracy and speed. The Ticket approach eliminates all post-trapping repair and exception editing, further reduced by unique functions such as Gap Detection. Advanced rule sets can be built, saved and re-used, either interactively or in batch on the BackStage server. All traps are added on a separate editable layer.

Barcodes. Conforming to industry demands, Barcodes lets you customize a box width and height separately. Barcodes, dynamic objects using the job's metadata, support industry standards, including DATAMATRIX and PDF417.

PackEdge offers advanced and **dynamic CAD and graphics integration**, including an 'export to VRML' function, enabling you to view a **3D simulation** of your job.

PackEdge without input and output modules offers the full set of PackEdge expert tools connected to the Backstage server (where background processing and file input and output is handled). This makes PackEdge a most affordable hi-end solution when growing business requires flexible scalability



ShrinkSleeve distortion. The Shrink Sleeve Module is an optional extension to the Warp module of PackEdge. The ShrinkSleeve module pre-distorts designs for shrink sleeve label production. After shrinking the printed sleeve to the bottle, the design adapts to its original and intended shape. The pre-distortion is defined by the contour of the bottle and the relative position of the design to the contour of the bottle. Different warping and distortion types can be selected. The pre-distortion can also pre-adjust screening values to avoid ink density problems. 3D VRML files can be created from within the ShrinkSleeve module. The 3D result can be viewed and rotated in conjunction with the 2D prepress version of the file.

InkWizard. The InkWizard optional module converts jobs, including images to any target color space. Both off the shelf color sets (PANTONE Hexachrome, Opalton®[®], FM6,...) and custom color sets are supported. InkWizard takes full advantage of PackEdge for optimal editability and flexibility both before and after converting to the multicolor process set.



InkWizard before



InkWizard after

PackEdge is a member of Esko Software Suite 7, Esko's advanced workflow environment integrating a number of software products for packaging service providers and commercial printers. The Esko Software Suite covers a wide range of functions, from job management, through graphic and structural design and pre-production operations, to platemaking for printing and toolmaking for converting.